

## Installation plan

The first step when buying artificial grass for a garden is to calculate how many metres are needed and where to make the seams. This can be done by drawing up an installation plan.

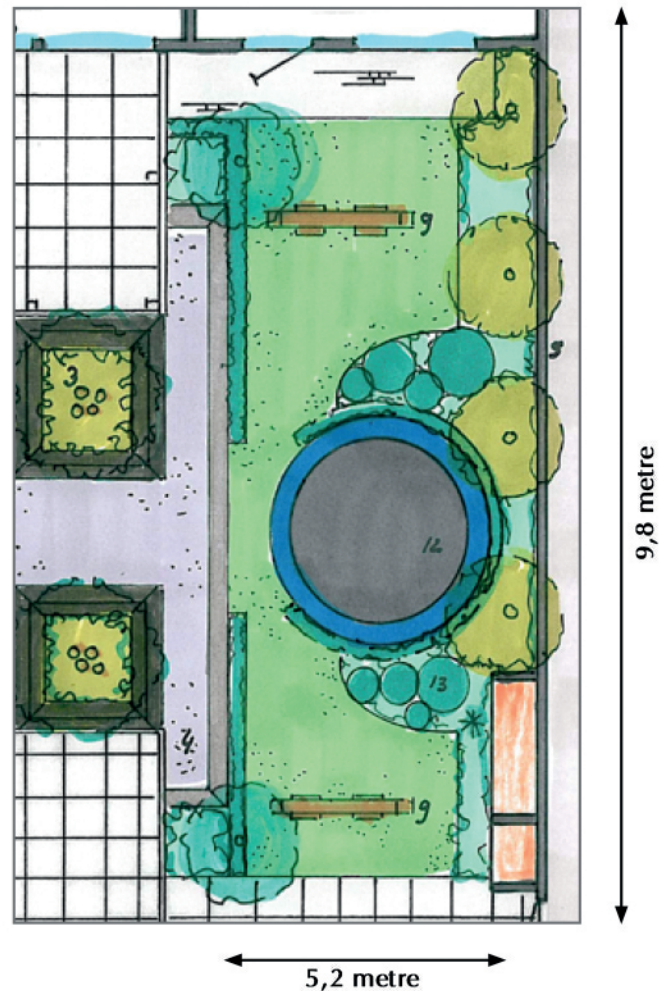
Points of attention:

- When installing Royal Grass® on areas broader than 4 metres; make sure you lay the rolls in parallel. Rotating or flipping the artificial grass will give an optical color difference (such as with patterned wallpaper).
- Royal Grass® is delivered on 2-metre or 4-metre wide rolls.
- Include at least an extra 15 cm for both the width and the length to compensate for losses when cutting the artificial turf to size.
- Artificial grass comes with a pile direction. It is advisable to lay pile direction so that it points to your favourite vantage point; generally the (main) terrace. The pile direction is always lengthwise on the role, never widthwise.

## Order Royal Grass®

See example to calculate how much artificial turf you require on 2-metre or 4-metre rolls\*. If you have more than one roll of artificial turf, then you need seam tape to connect the pieces together. The required length of seam tape is equal to the length of the roll of artificial turf.

\* Including an extra 15 cm for both the width and the length to compensate for losses!



**Option A** - Viewing direction from the narrow side (2 strips):

- Artificial turf:  $4 \times 10.0 \text{ metres} + 2 \times 10.0 \text{ metres} = 60 \text{ m}^2$
- Seam tape for one seam of 10 metres.

**Option B** - Viewing direction from the wide side (3 strips):

- Artificial turf:  $4 \times 10.8 \text{ metres}$  (for 2 strips which are 4 metres wide) +  $2 \times 5.4 \text{ metres} = 54 \text{ m}^2$
- Seam tape for three seams of 5.2 metres.